

Space Utilization

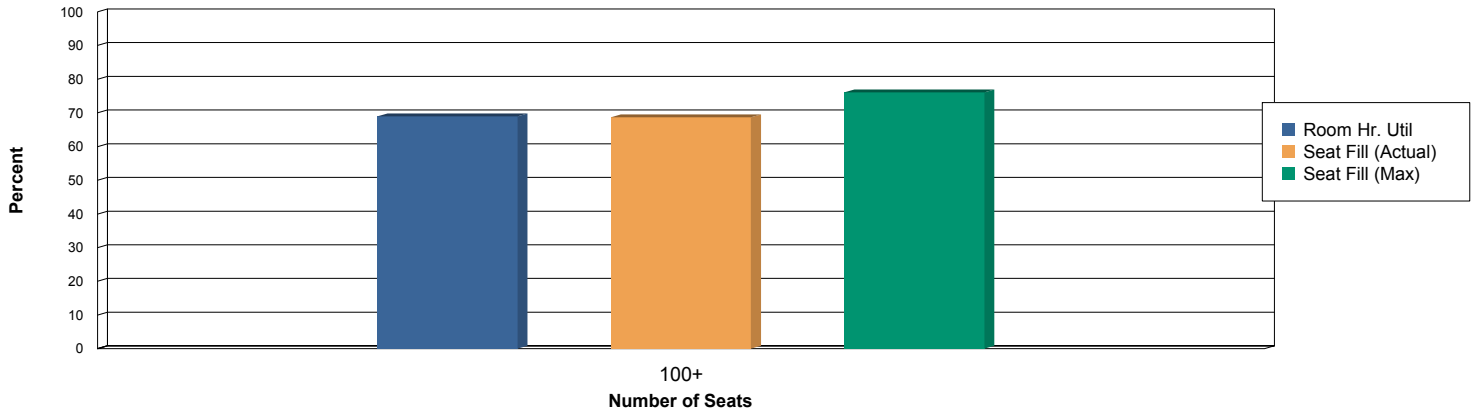
Average Weekly Utilization for Sections Only by Room Type and Size

12/7/2016
4:41 pm

Term weeks: 15.00 Hours in Standard week: 70.00 Dates: 8/24/2016 - 12/9/2016
Standard Week: Monday, Tuesday, Wednesday, Thursday, Friday - 8:00 AM to 10:00 PM

Room Type - Capacity	# of Rooms	Room Hrs.	Room Hr. Util.	Room Capacity	Enrollment/ Max Enrollment	Fill Ratio Actual Enroll.	Fill Ratio Max Enroll.
M - M							
Auditorium							
100+ Seats	1	48.30	69.00%	377.00	258.95 / 287.04	68.69%	76.14%
	1	48.30	69.00%	377.00	258.95 / 287.04	68.69%	76.14%

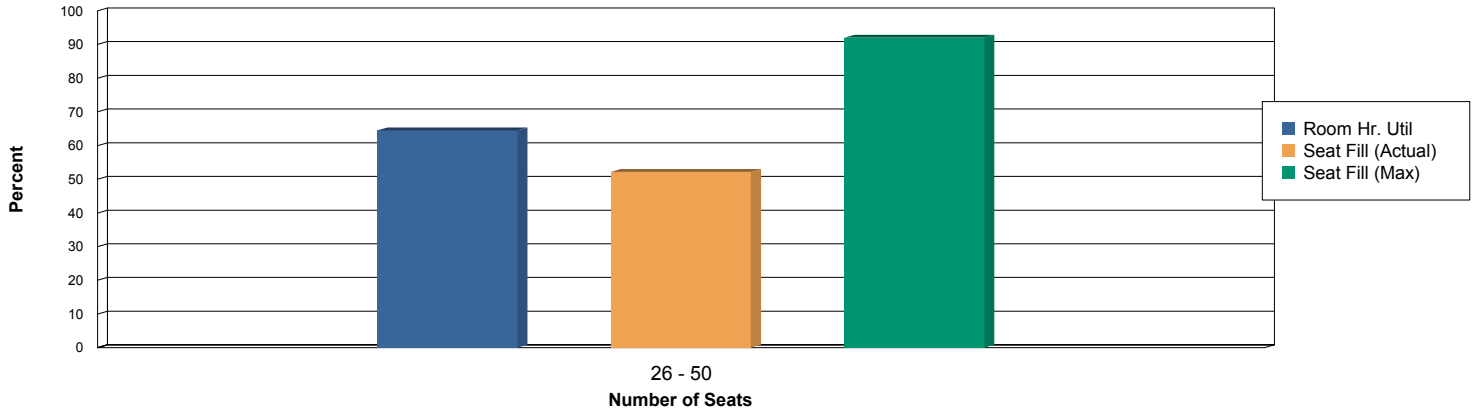
Auditorium



Classroom-Case Study

26 - 50 Seats	3	135.43	64.49%	45.00	23.47 / 41.40	52.15%	92.00%
	3	135.43	64.49%	45.00	23.47 / 41.40	52.15%	92.00%

Classroom-Case Study



Classroom-General Assignment

16 - 25 Seats	21	894.60	60.86%	22.75	17.56 / 20.86	77.17%	91.66%
26 - 50 Seats	9	473.93	75.23%	32.00	24.64 / 31.36	77.00%	98.02%
51 - 100 Seats	6	198.70	47.31%	61.64	41.88 / 60.86	67.94%	98.72%

Space Utilization

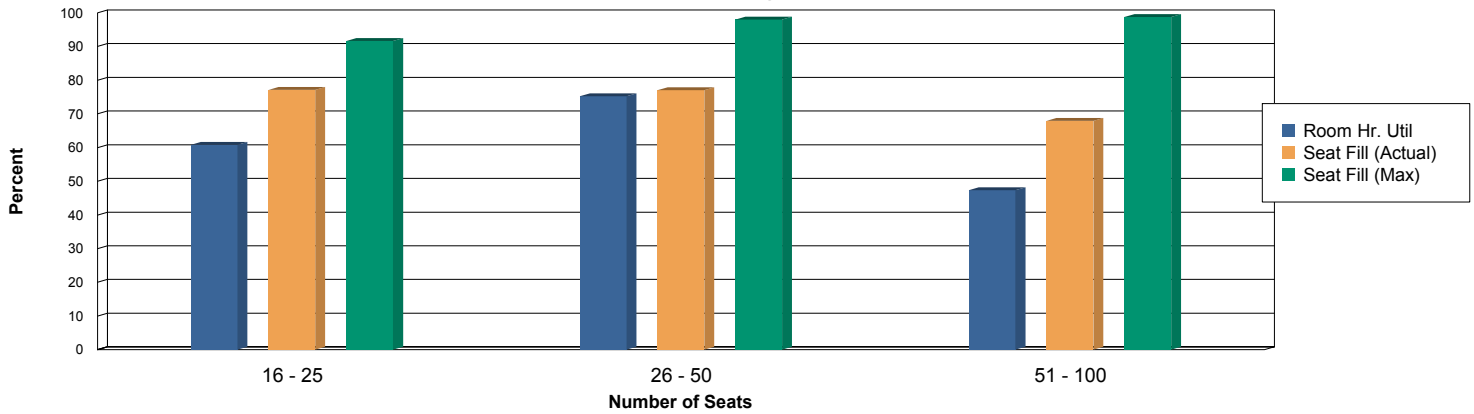
Average Weekly Utilization for Sections Only by Room Type and Size

12/7/2016
4:41 pm

Term weeks: 15.00 Hours in Standard week: 70.00 Dates: 8/24/2016 - 12/9/2016
Standard Week: Monday, Tuesday, Wednesday, Thursday, Friday - 8:00 AM to 10:00 PM

Room Type - Capacity	# of Rooms	Room Hrs.	Room Hr. Util.	Room Capacity	Enrollment/ Max Enrollment	Fill Ratio Actual Enroll.	Fill Ratio Max Enroll.
	36	1,567.23	62.19%	30.48	22.78 / 29.10	74.75%	95.49%

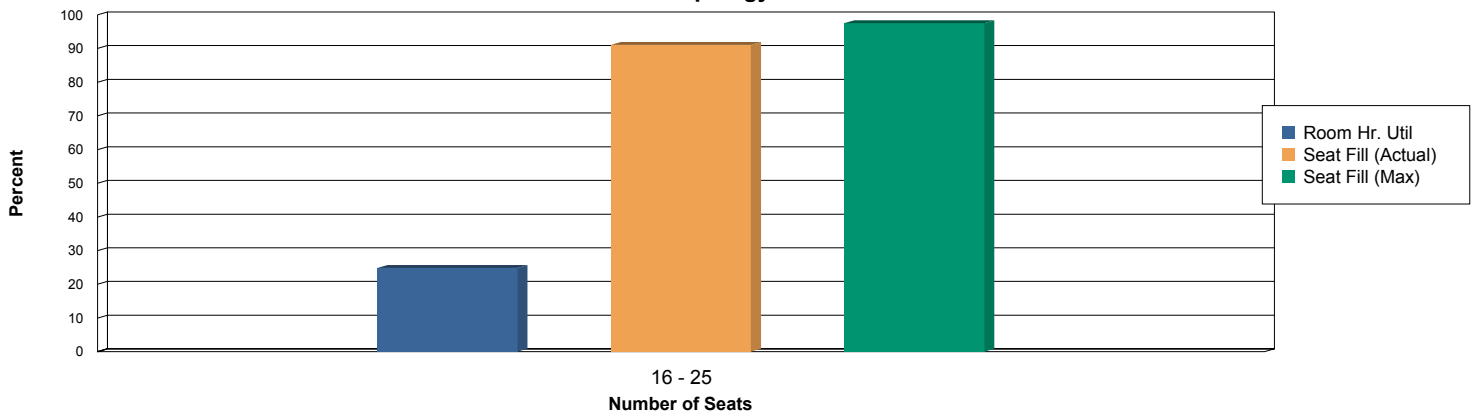
Classroom-General Assignment



Lab-Anthropology

16 - 25 Seats	1	17.40	24.86%	18.00	16.39 / 17.56	91.06%	97.53%
	1	17.40	24.86%	18.00	16.39 / 17.56	91.06%	97.53%

Lab-Anthropology



Lab-Computer-Dual Boot

26 - 50 Seats	4	173.60	62.00%	33.95	24.01 / 30.78	70.73%	90.67%
---------------	---	--------	--------	-------	---------------	--------	--------

Space Utilization

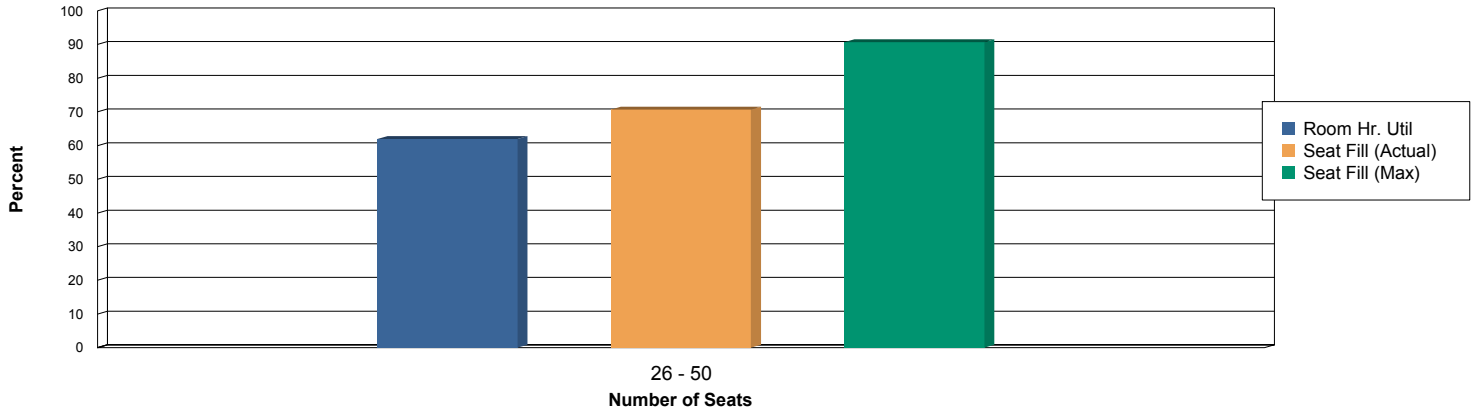
Average Weekly Utilization for Sections Only by Room Type and Size

12/7/2016
4:41 pm

Term weeks: 15.00 Hours in Standard week: 70.00 Dates: 8/24/2016 - 12/9/2016
Standard Week: Monday, Tuesday, Wednesday, Thursday, Friday - 8:00 AM to 10:00 PM

Room Type - Capacity	# of Rooms	Room Hrs.	Room Hr. Util.	Room Capacity	Enrollment/ Max Enrollment	Fill Ratio Actual Enroll.	Fill Ratio Max Enroll.
	4	173.60	62.00%	33.95	24.01 / 30.78	70.73%	90.67%

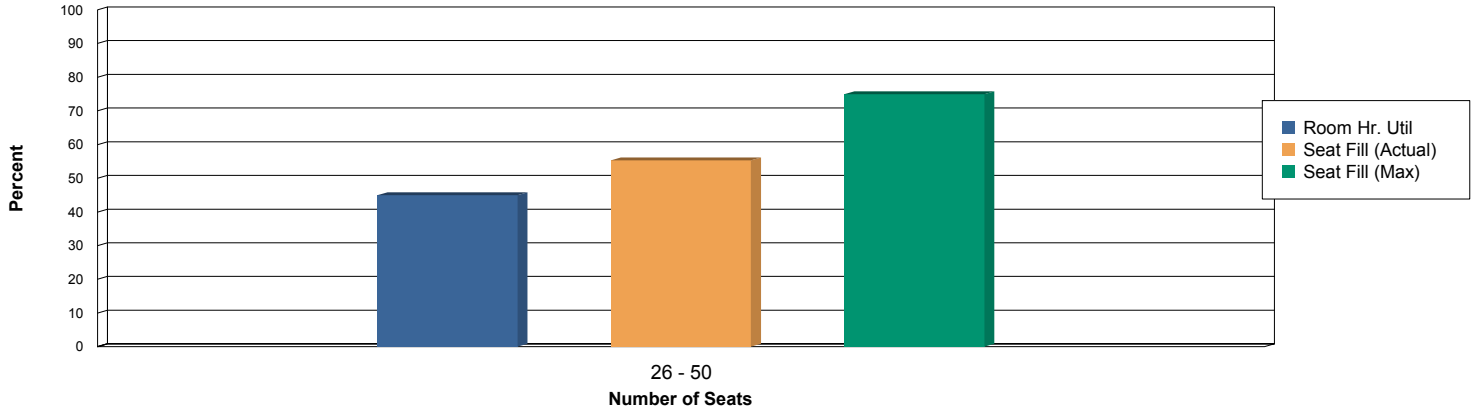
Lab-Computer-Dual Boot



Lab-Computer-Language

26 - 50 Seats	1	31.47	44.95%	40.00	22.13 / 30.00	55.31%	75.00%
	1	31.47	44.95%	40.00	22.13 / 30.00	55.31%	75.00%

Lab-Computer-Language



Lab-Computer-Linux

26 - 50 Seats	2	100.20	71.57%	31.00	26.14 / 30.51	84.32%	98.42%
---------------	---	--------	--------	-------	---------------	--------	--------

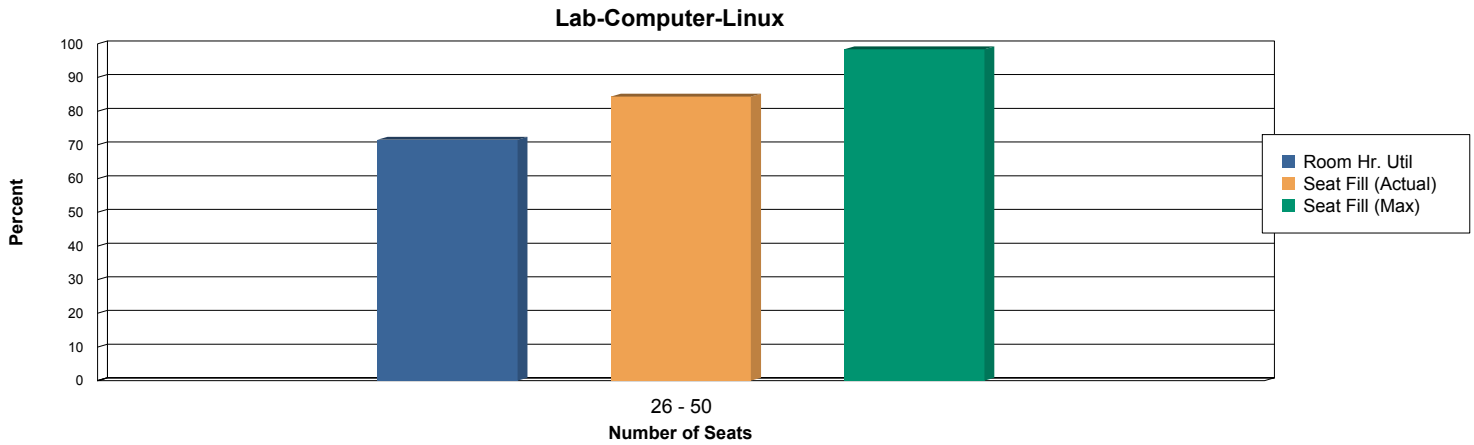
Space Utilization

Average Weekly Utilization for Sections Only by Room Type and Size

12/7/2016
4:41 pm

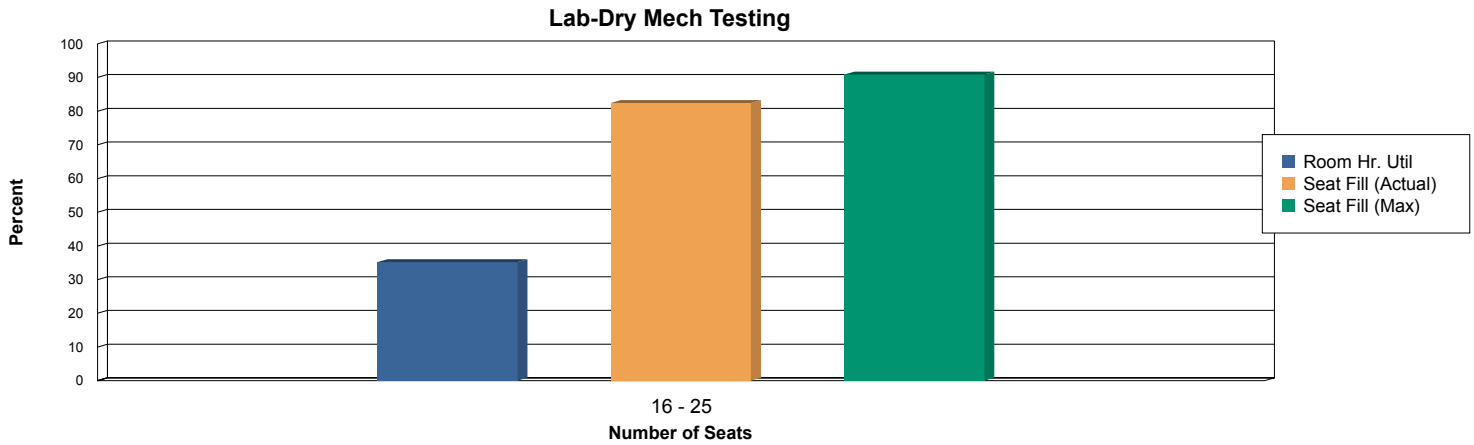
Term weeks: 15.00 Hours in Standard week: 70.00 Dates: 8/24/2016 - 12/9/2016
Standard Week: Monday, Tuesday, Wednesday, Thursday, Friday - 8:00 AM to 10:00 PM

Room Type - Capacity	# of Rooms	Room Hrs.	Room Hr. Util.	Room Capacity	Enrollment/ Max Enrollment	Fill Ratio Actual Enroll.	Fill Ratio Max Enroll.
	2	100.20	71.57%	31.00	26.14 / 30.51	84.32%	98.42%



Lab-Dry Mech Testing

16 - 25 Seats	1	24.63	35.19%	24.00	19.78 / 21.81	82.42%	90.88%
	1	24.63	35.19%	24.00	19.78 / 21.81	82.42%	90.88%



Lab-Dry-Engineering

16 - 25 Seats	1	11.40	16.29%	20.00	13.98 / 15.00	69.91%	75.00%
---------------	---	-------	--------	-------	---------------	--------	--------

Space Utilization

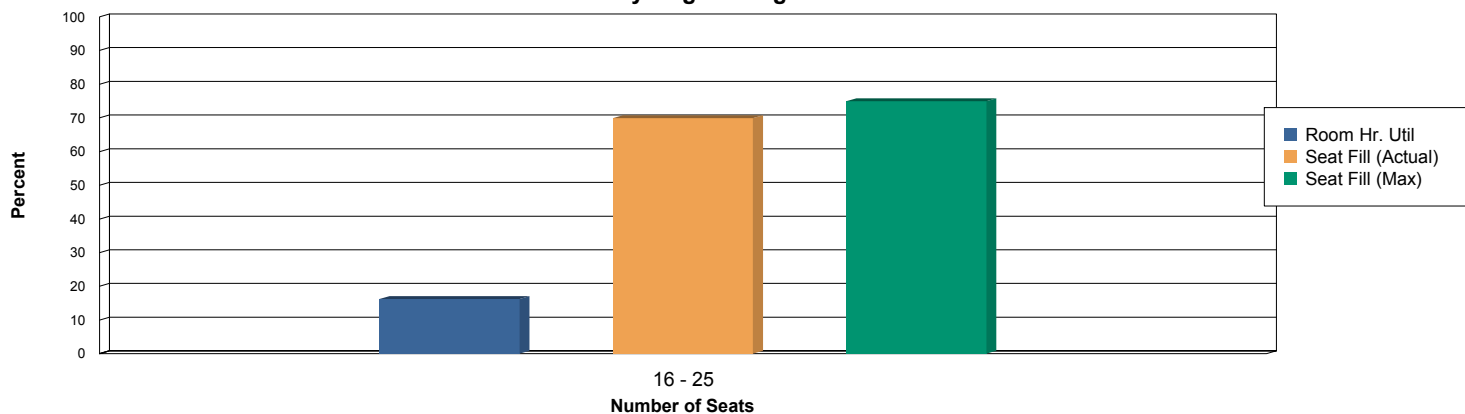
Average Weekly Utilization for Sections Only by Room Type and Size

12/7/2016
4:41 pm

Term weeks: 15.00 Hours in Standard week: 70.00 Dates: 8/24/2016 - 12/9/2016
Standard Week: Monday, Tuesday, Wednesday, Thursday, Friday - 8:00 AM to 10:00 PM

Room Type - Capacity	# of Rooms	Room Hrs.	Room Hr. Util.	Room Capacity	Enrollment/ Max Enrollment	Fill Ratio Actual Enroll.	Fill Ratio Max Enroll.
	1	11.40	16.29%	20.00	13.98 / 15.00	69.91%	75.00%

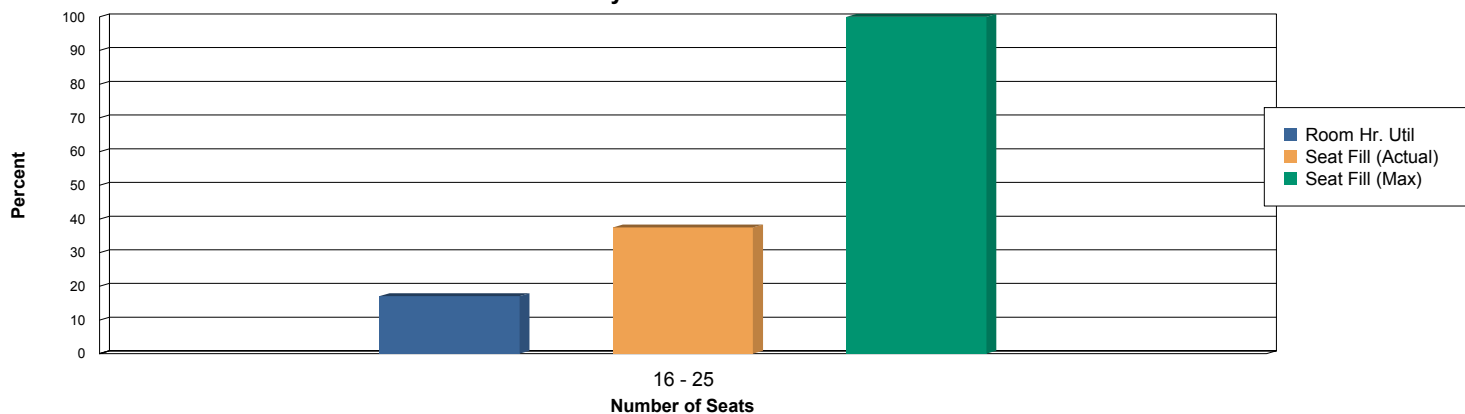
Lab-Dry-Engineering



Lab-Dry-Instrumentation

16 - 25 Seats	1	12.00	17.14%	20.00	7.50 / 20.00	37.50%	100.00%
	1	12.00	17.14%	20.00	7.50 / 20.00	37.50%	100.00%

Lab-Dry-Instrumentation



Lab-Dry-Mechatronics

16 - 25 Seats	1	26.20	37.43%	24.00	19.27 / 21.31	80.28%	88.80%
---------------	---	-------	--------	-------	---------------	--------	--------

Space Utilization

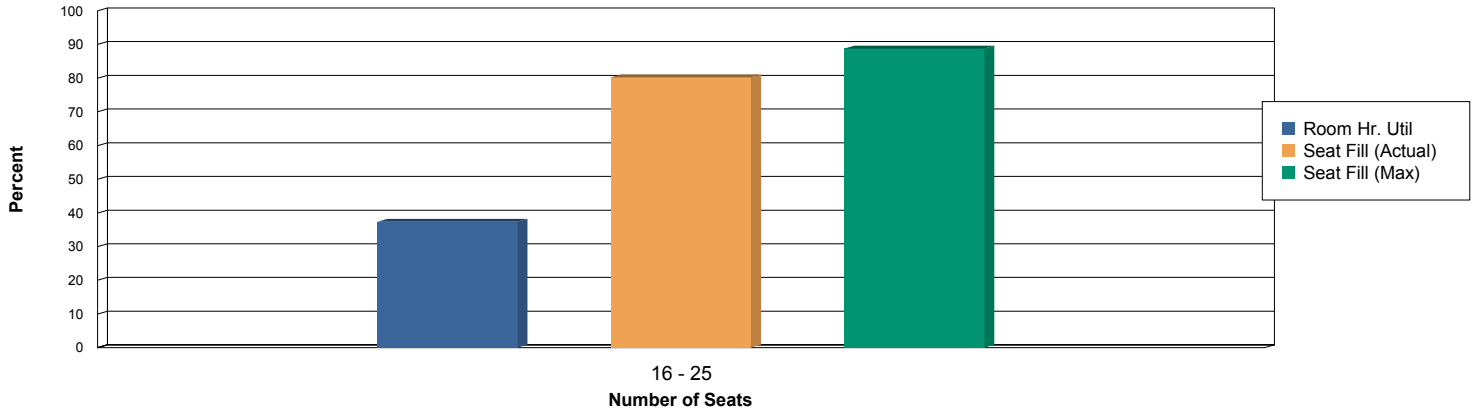
Average Weekly Utilization for Sections Only by Room Type and Size

12/7/2016
4:41 pm

Term weeks: 15.00 Hours in Standard week: 70.00 Dates: 8/24/2016 - 12/9/2016
Standard Week: Monday, Tuesday, Wednesday, Thursday, Friday - 8:00 AM to 10:00 PM

Room Type - Capacity	# of Rooms	Room Hrs.	Room Hr. Util.	Room Capacity	Enrollment/ Max Enrollment	Fill Ratio Actual Enroll.	Fill Ratio Max Enroll.
	1	26.20	37.43%	24.00	19.27 / 21.31	80.28%	88.80%

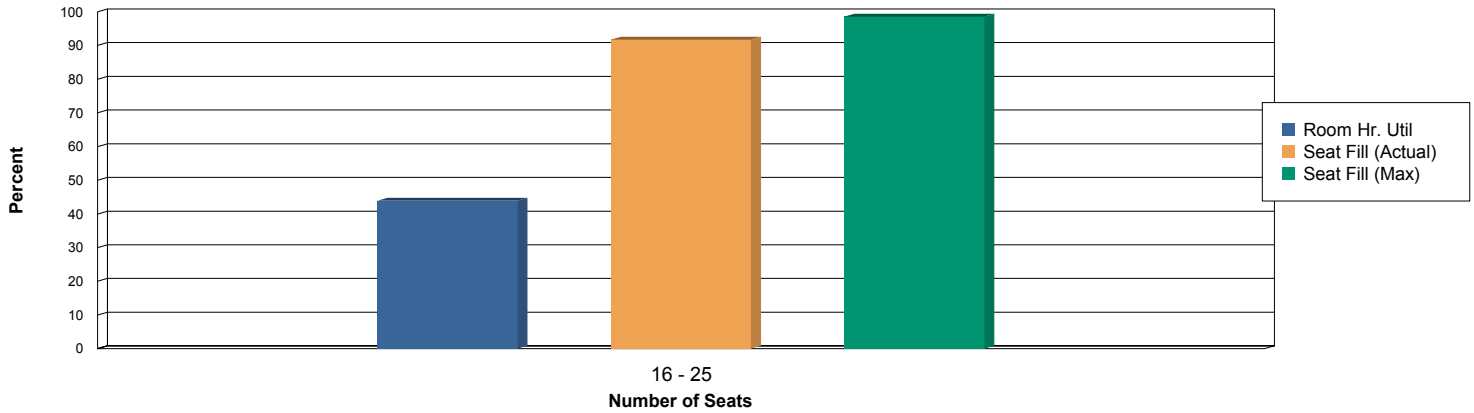
Lab-Dry-Mechatronics



Lab-Dry-Physics

16 - 25 Seats	2	61.47	43.90%	24.00	22.03 / 23.67	91.78%	98.61%
	2	61.47	43.90%	24.00	22.03 / 23.67	91.78%	98.61%

Lab-Dry-Physics



Lab-Music

26 - 50 Seats	1	39.20	56.00%	49.00	35.53 / 67.68	72.51%	138.13%
---------------	---	-------	--------	-------	---------------	--------	---------

Space Utilization

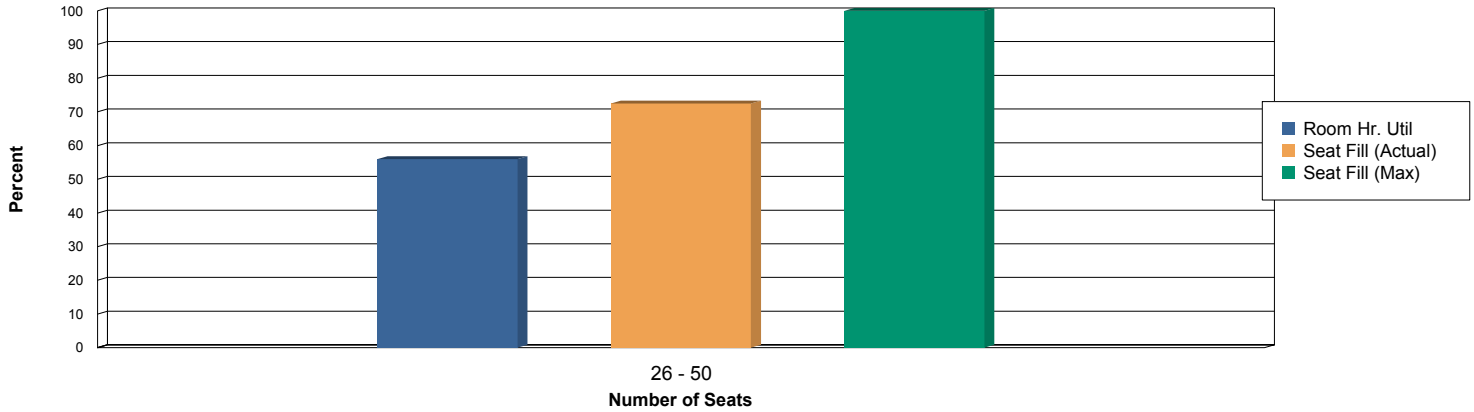
Average Weekly Utilization for Sections Only by Room Type and Size

12/7/2016
4:41 pm

Term weeks: 15.00 Hours in Standard week: 70.00 Dates: 8/24/2016 - 12/9/2016
Standard Week: Monday, Tuesday, Wednesday, Thursday, Friday - 8:00 AM to 10:00 PM

Room Type - Capacity	# of Rooms	Room Hrs.	Room Hr. Util.	Room Capacity	Enrollment/ Max Enrollment	Fill Ratio Actual Enroll.	Fill Ratio Max Enroll.
	1	39.20	56.00%	49.00	35.53 / 67.68	72.51%	138.13%

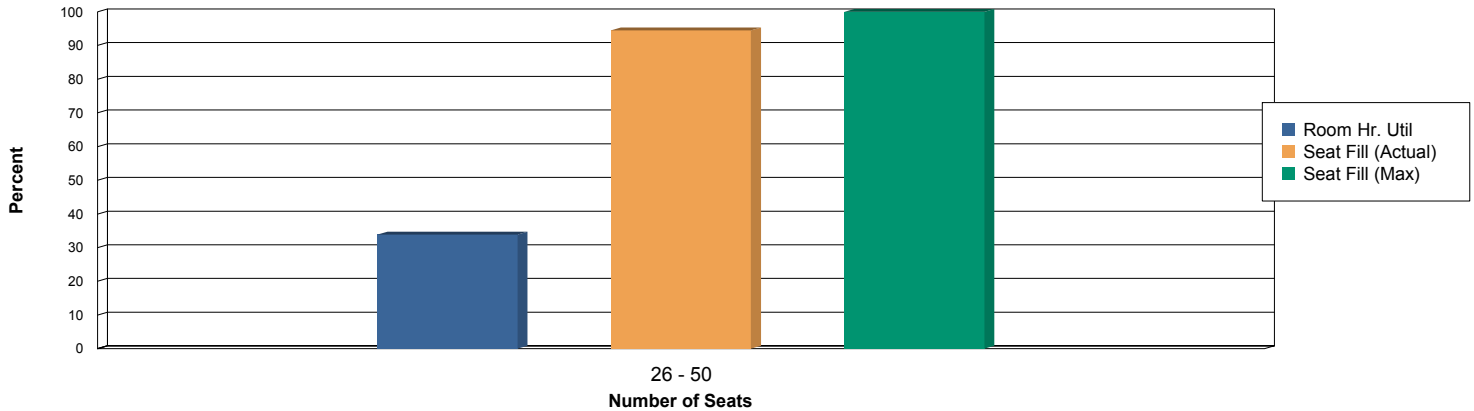
Lab-Music



Lab-Studio Art

26 - 50 Seats	1	23.73	33.90%	30.00	28.35 / 30.00	94.49%	100.00%
	1	23.73	33.90%	30.00	28.35 / 30.00	94.49%	100.00%

Lab-Studio Art



Lab-Wet-Anatomy

16 - 25 Seats	1	12.00	17.14%	20.00	18.50 / 20.00	92.50%	100.00%
---------------	---	-------	--------	-------	---------------	--------	---------



Space Utilization

Average Weekly Utilization for Sections Only by Room Type and Size

12/7/2016
4:41 pm

Term weeks: 15.00

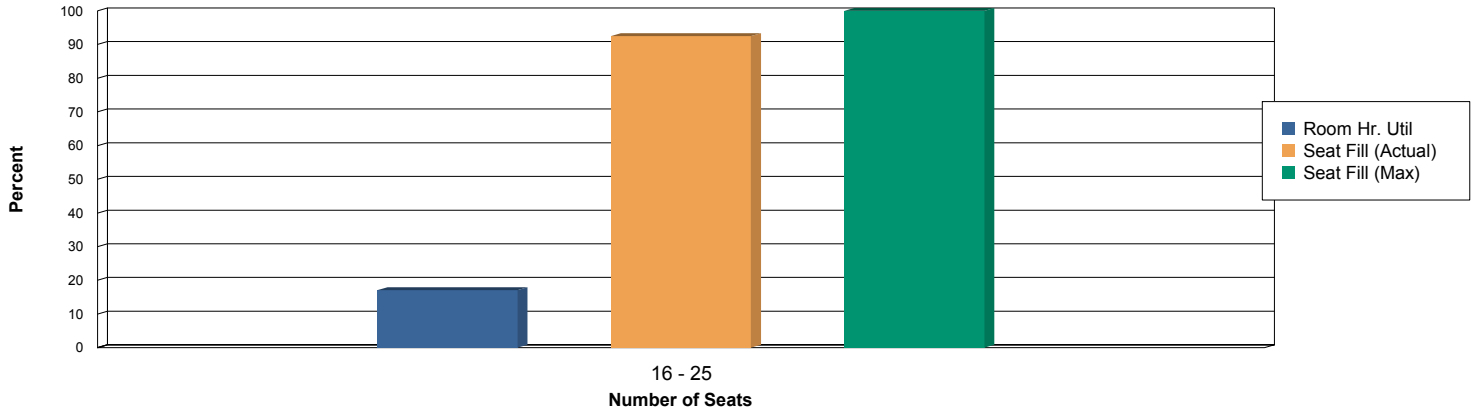
Hours in Standard week: 70.00

Dates: 8/24/2016 - 12/9/2016

Standard Week: Monday, Tuesday, Wednesday, Thursday, Friday - 8:00 AM to 10:00 PM

Room Type - Capacity	# of Rooms	Room Hrs.	Room Hr. Util.	Room Capacity	Enrollment/ Max Enrollment	Fill Ratio Actual Enroll.	Fill Ratio Max Enroll.
	1	12.00	17.14%	20.00	18.50 / 20.00	92.50%	100.00%

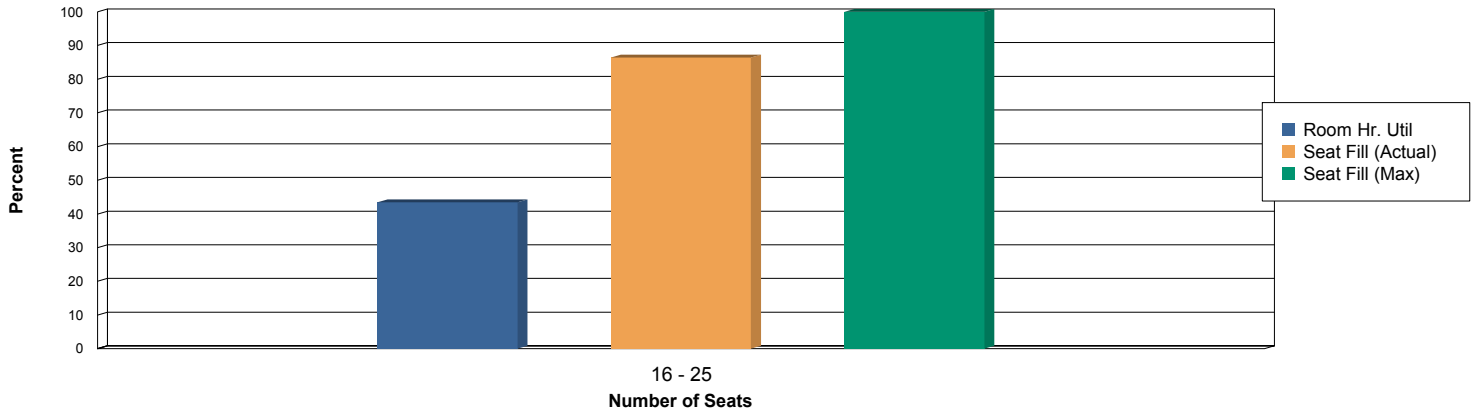
Lab-Wet-Anatomy



Lab-Wet-Biology

16 - 25 Seats	4	121.83	43.51%	23.32	20.15 / 23.32	86.40%	100.00%
	4	121.83	43.51%	23.32	20.15 / 23.32	86.40%	100.00%

Lab-Wet-Biology



Lab-Wet-Chemistry

16 - 25 Seats	5	163.00	46.57%	21.41	18.25 / 21.41	85.25%	100.00%
---------------	---	--------	--------	-------	---------------	--------	---------



Space Utilization

Average Weekly Utilization for Sections Only by Room Type and Size

12/7/2016
4:41 pm

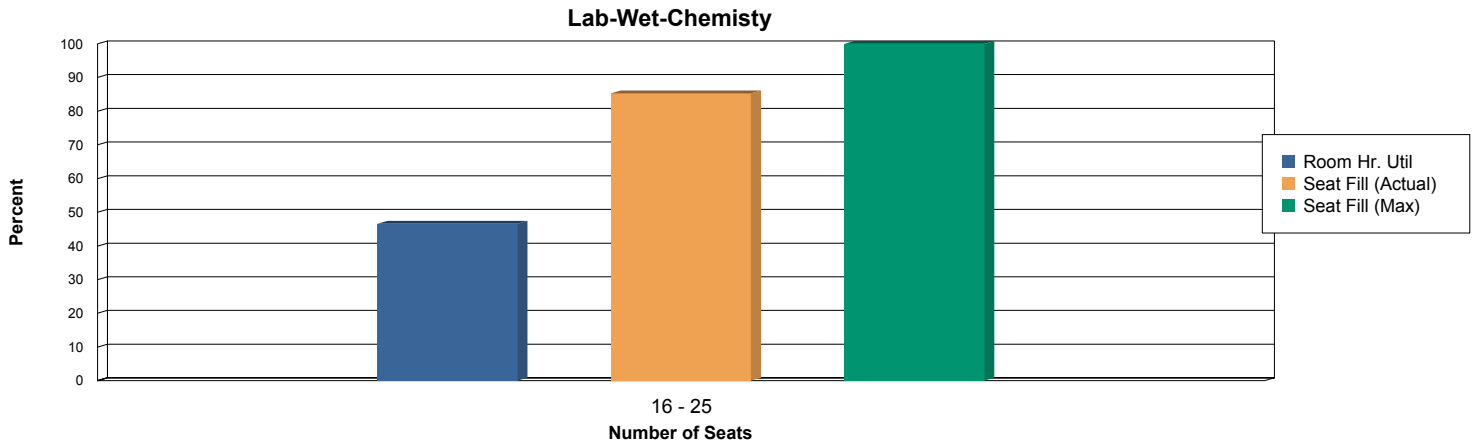
Term weeks: 15.00

Hours in Standard week: 70.00

Dates: 8/24/2016 - 12/9/2016

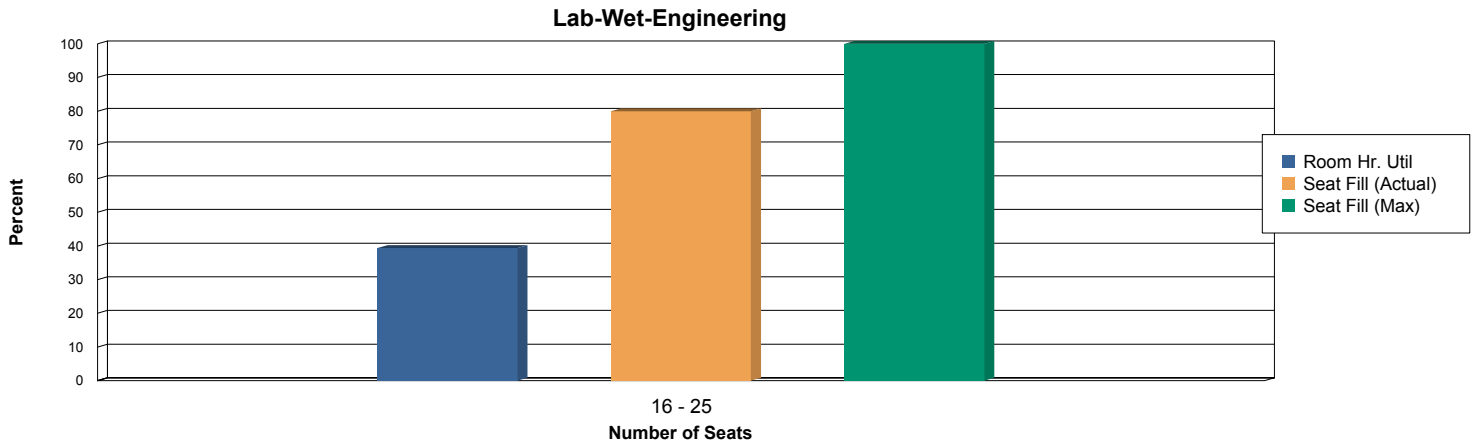
Standard Week: Monday, Tuesday, Wednesday, Thursday, Friday - 8:00 AM to 10:00 PM

Room Type - Capacity	# of Rooms	Room Hrs.	Room Hr. Util.	Room Capacity	Enrollment/ Max Enrollment	Fill Ratio Actual Enroll.	Fill Ratio Max Enroll.
	5	163.00	46.57%	21.41	18.25 / 21.41	85.25%	100.00%



Lab-Wet-Engineering

16 - 25 Seats	3	82.70	39.38%	24.00	19.20 / 24.56	79.99%	102.32%
	3	82.70	39.38%	24.00	19.20 / 24.56	79.99%	102.32%



Lab-Wet-Fluid Mechanics

1 - 15 Seats	1	17.40	24.86%	12.00	11.84 / 12.00	98.66%	100.00%
--------------	---	-------	--------	-------	---------------	--------	---------



Space Utilization

Average Weekly Utilization for Sections Only by Room Type and Size

12/7/2016
4:41 pm

Term weeks: 15.00

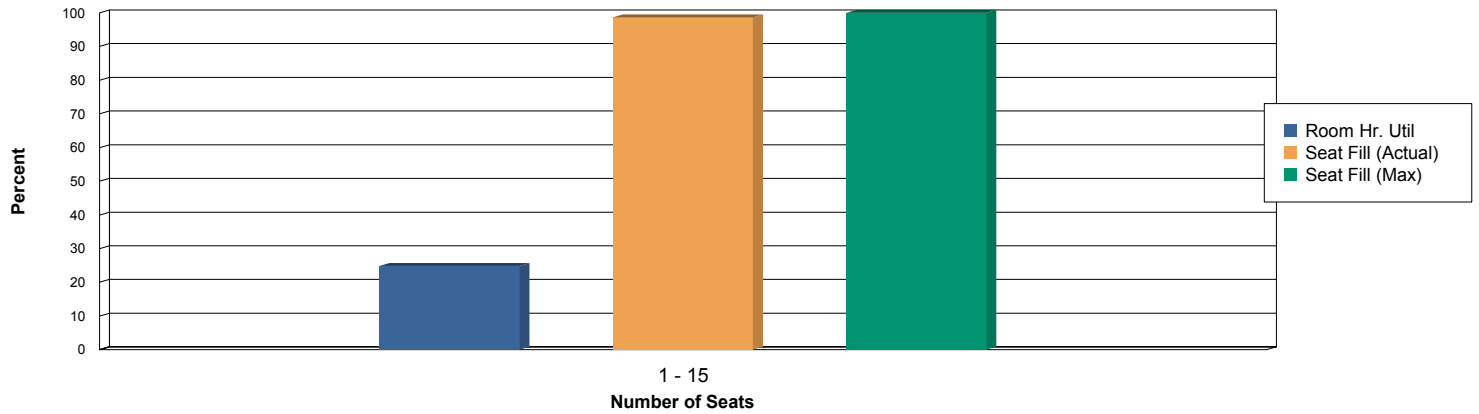
Hours in Standard week: 70.00

Dates: 8/24/2016 - 12/9/2016

Standard Week: Monday, Tuesday, Wednesday, Thursday, Friday - 8:00 AM to 10:00 PM

Room Type - Capacity	# of Rooms	Room Hrs.	Room Hr. Util.	Room Capacity	Enrollment/ Max Enrollment	Fill Ratio Actual Enroll.	Fill Ratio Max Enroll.
	1	17.40	24.86%	12.00	11.84 / 12.00	98.66%	100.00%

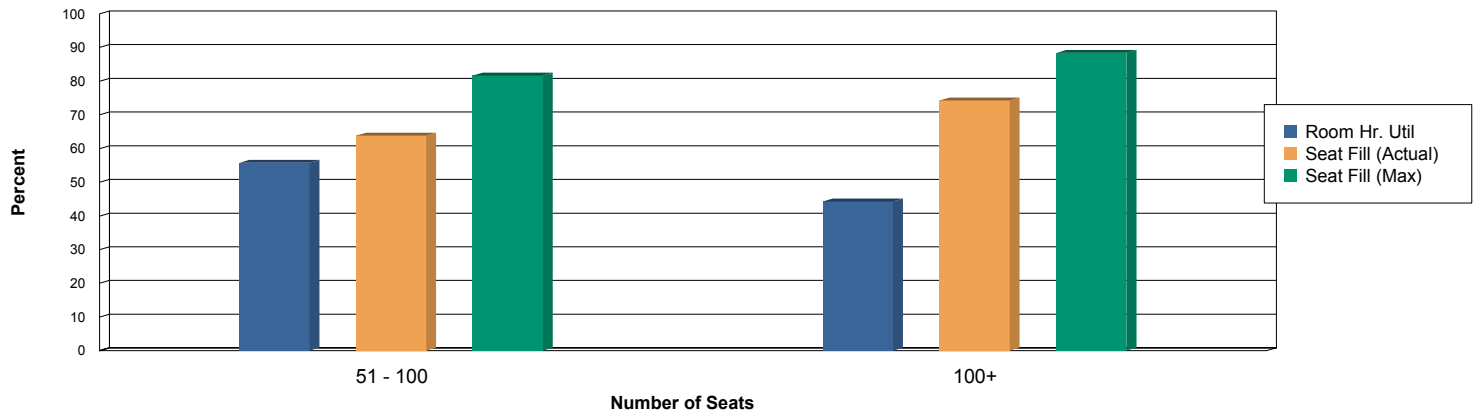
Lab-Wet-Fluid Mechanics



Lecture Hall

51 - 100 Seats	3	117.27	55.84%	90.00	57.47 / 73.55	63.85%	81.72%
100+ Seats	8	248.20	44.32%	145.95	108.40 / 129.01	74.27%	88.39%
	11	365.47	47.46%	128.00	92.05 / 111.21	71.92%	86.89%

Lecture Hall



Seminar Videoconference

1 - 15 Seats	2	47.60	34.00%	12.00	5.82 / 13.70	48.53%	114.18%
--------------	---	-------	--------	-------	--------------	--------	---------



Space Utilization

Average Weekly Utilization for Sections Only by Room Type and Size

12/7/2016
4:41 pm

Term weeks: 15.00

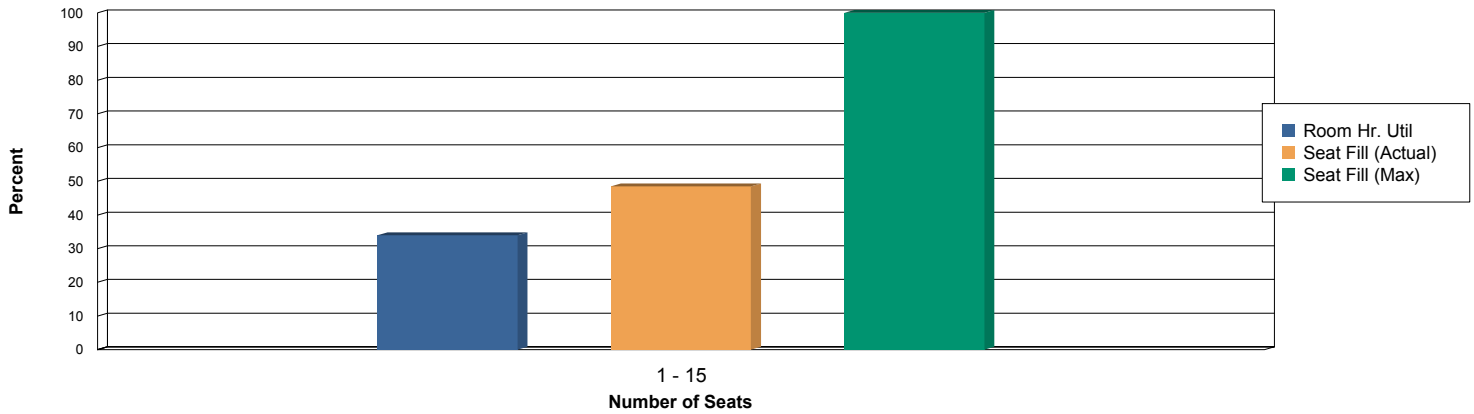
Hours in Standard week: 70.00

Dates: 8/24/2016 - 12/9/2016

Standard Week: Monday, Tuesday, Wednesday, Thursday, Friday - 8:00 AM to 10:00 PM

Room Type - Capacity	# of Rooms	Room Hrs.	Room Hr. Util.	Room Capacity	Enrollment/ Max Enrollment	Fill Ratio Actual Enroll.	Fill Ratio Max Enroll.
	2	47.60	34.00%	12.00	5.82 / 13.70	48.53%	114.18%

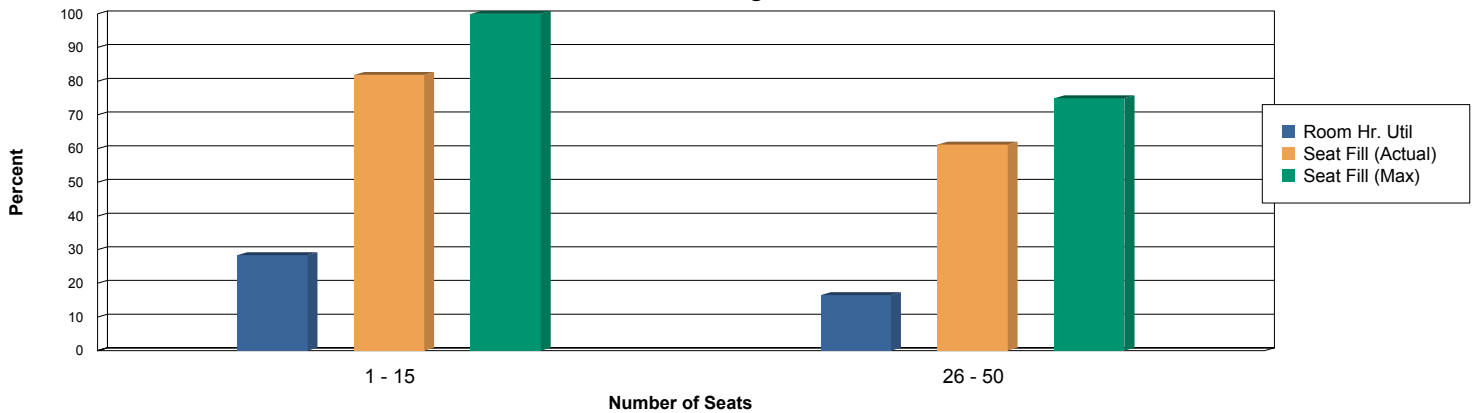
Seminar Videoconference



Service Learning

1 - 15 Seats	1	19.87	28.38%	15.00	12.28 / 30.00	81.88%	200.00%
26 - 50 Seats	1	11.60	16.57%	40.00	24.49 / 30.00	61.24%	75.00%
	2	31.47	22.48%	24.22	16.78 / 30.00	69.31%	123.88%

Service Learning



85	3,113.73	52.33%	46.67	33.95 / 42.43	72.75%	90.91%
----	----------	--------	-------	---------------	--------	--------

Space Utilization by RoomType and Size Report Key

Purpose of Report

The Space Utilization by Room Type and Size report shows average weekly room hours from academic sections by room type (with rooms divided by seating capacity groups) highlighting room hour utilization and station fill (students in seats). Space utilization calculations are based on the user specified number of hours in a standard scheduling week. Additional fields show a station fill calculation on either max enrollment or actual enrollment of a section. This report can be used to measure how efficiently different types and sizes of rooms are scheduled both in terms of hours per week, and seat fill. Hours used by double books and crosslists are counted only once. Enrollments and max enrollments for double books and crosslists are added together.

Definition of User Defined Parameters

Select Start and End Date - Allows a user to filter activities within a date range. The report will bring in records from all section meetings that occur between the start and end date.

Length of Term (in Weeks) - The report will calculate utilization based on all activities between the start and end date selected. To calculate average weekly utilization, total hours are divided by the number of weeks specified. This allows a user to account for Term dates including exam week, holiday weeks, etc.

Days in Standard Week - The report will only bring in room hours that occur on these selected days.

Standard Week Start and End Time - The report will only bring in room hours that occur between these start and end times.

Enter Hours in Standard Week - This parameter allows a user to enter the number of hours in the standard class week. For example, if the standard week to offer classes is 8:00a to 5:00p, Monday through Friday, the standard week would be 45 hours. This number is then used in the Room Hour Utilization calculation (Room Hours / Standard Week).

Definition of Report Fields

Room Type - Capacity - Rooms are grouped by room type and size category based on the number of seats in the room. Room size categories include 1 - 15 seats, 16 - 25 seats, 26 - 50 seats, 51 - 100 seats, and 100+ seats.

of Rooms - Total number of rooms in the size category grouping.

Room Hours - Average number of weekly hours scheduled in rooms of that roomtype/size during the selected term. All section activities are added up by room. Room hours used by double booked and crosslisted classes are only counted once. A class that meets from 8:00a to 9:00a on MWF for the entire specified term would get counted for three hours per week for the entire term (if it met for 16 weeks, it would account for 48 total hours, and then be divided by the Length of Term parameter ($48 / 16 = 3$ average weekly room hours)). If that same class met for only half of the specified term (8 weeks), it would only get counted for one and half hours of usage ($24 / 16 = 1.5$ average weekly room hours). Class hours are rounded up to the next half hour (a class meeting from 8:00a to 9:45a would get counted as 2.00 hours).

Room Hour Utilization - Percentage of the standard weekly hours used in that room type/size category. The standard weekly hours are entered as a user defined parameter when the report is run. ($\text{Room Hours} / (\text{\#of Rooms in Size Category} * \text{Standard Week})$)

Room Capacity - Average number of seats in the rooms of that room type/size category.

Enrollment/Max Enrollment - Weighted average of the actual enrollment and max enrollment of each section scheduled into rooms in that room type/size category during the specified term.

Fill Ratio (Actual and Max) - Ratio of Actual enrollment or Max Enrollment to the average capacity of the rooms in the group.